

ROTOR MILL ARM-5

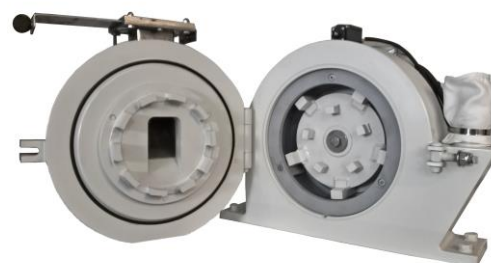
Standard equipment:

- Hopper made of stainless steel of the type AISI 304
- Mill stand
- Control box
- Separation round sieves made of acid-resistant steel, with round or trapezoidal holes
- Rotor made from abrasion-resistant steel; finger or turbine rotor
- Collar for discharging grinding material (without collecting tank)

Product advantages:

- Grinding material is charged through the hopper and the shut-off bolt
- Collection of the material during grinding takes place through the sleeve to the container or to the collecting bag
- Easy replacement of the separation round sieves
- Adjustable rotor speed for variable grinding conditions
- Lack of "dead" spaces in the mill results in easy and lossless grinding and trouble-free cleaning of the device between samples

Warranty: 12 months
Warranty and post-warranty service



OPENED GRINDING CHAMBER

Technical data	ARM- 5
Efficiency	50 kg/h
Material feed size	Max. 50 mm
Final fineness	< 50 µm depends on grinding material and chosen sieve
Adjustable rotor speed	from 700 to 7000 rpm
Drive power	4,0 kW
Drive	3x400 V/ 50Hz
Height of the hopper	1450 mm
Weight	ca. 150 kg

Accessories for the ARM- 5 MILL	catalog number
Finger rotor made of wear-resistant steel	C14-ARM5-0101
Turbine rotor made of wear-resistant steel	C14-ARM5-0102
Sieve frame made of tool steel	C14-ARM5-0201
Sieve frame made of acid-resistant steel	C14-ARM5-0202
Sieve insert with 3 mm round holes	C14-ARM5-0303
Sieve insert with 3,5 mm round holes	C14-ARM5-0303
Sieve insert with 4 mm round holes	C14-ARM5-0304
Sieve insert with 6 mm round holes	C14-ARM5-0306
Sieve insert with 8 mm round holes	C14-ARM5-0308
Sieve insert with 10 mm round holes	C14-ARM5-0310
Sieve insert with 0,5 mm trapezoidal holes	C14-ARM5-0400
Sieve insert with 1 mm trapezoidal	C14-ARM5-0401
Sieve insert with 2 mm trapezoidal holes	C14-ARM5-0402

Attention:

Sieves inserts with other hole sizes are available on request.

